



Research Article

Acoustic Survey of an Estuarine Marine Protected Area and of its Close Vicinity: Analysis and Monitoring Prospective

Nolwenn Béhagle¹, Jean Guillard^{2*}, Jean-Marc Ecoutin³,
Raymond Laë¹, Ibrahima Sow⁴, Luis Tito-de-Morais¹ and Anne
Lebourges-Dhaussy¹

¹Institut de Recherche pour le Développement (IRD), UMR LEMAR (UBO/
CNRS/IRD/IFREMER), Technopole Brest-Iroise, France

²Centre Alpin de Recherche sur les Réseaux Trophiques et les Ecosystèmes
Limniques, Thonon-les-Bains cedex, France

³Institut de Recherche pour le Développement (IRD), UMR LEMAR, CRHMT,
Sète, France

⁴Institut de Recherche pour le Développement (IRD), UMR LEMAR, Centre
de Recherche Océanographique Dakar-Thiaroye (CRODT), Rufisque,
Sénégal

Abstract

Facing the loss of fish biodiversity and the decrease of fish stocks since several decades, a proposed solution is the multiplication of Marine Protected Areas (MPA). In Senegal, one MPA has been implemented in 2003 in one of the channels composing the Sine Saloum estuary. A monitoring program was carried out based on hydro-acoustic survey and the two main metrics extracted from hydro-acoustic data: Fish biomass proxy and fish size distribution

*Corresponding author: Jean Guillard, UMR Carrtel, INRA, USMB, 75 bis, avenue de Corzent, F-74203 Thonon-les-Bains cedex, France, Tél: 33 0 4 50 26 78 51; E-mail: jean.guillard@inra.fr

Citation: Béhagle N, Guillard J, Ecoutin JM, Laë R, Sow I, et al. (2018) Acoustic Survey of an Estuarine Marine Protected Area and of its Close Vicinity: Analysis and Monitoring Prospective. J Aquac Fisheries 2: 011.

Received: September 03, 2018; Accepted: October 11, 2018; Published: October 26, 2018

Copyright: © 2018 Béhagle N, et al. This is an open-access article distributed under the terms of the Creative Commons Attribution License, which permits unrestricted use, distribution, and reproduction in any medium, provided the original author and source are credited.

proxy. The surveys were performed using vertical beaming at different seasons from 2003 to 2010. In the MPA, a light increase of the fish biomass proxy and an increase of the fish size proxy during the dry season were observed. The biomass proxy recorded in a close but not protected tributary were higher than in the MPA, probably due to a strong connection with open marine water, aggregative behavior of preys in the MPA due to higher predation, and a stronger avoidance phenomenon in the MPA. The high variability of the MPA environment submitted to both estuarine and marine influences and the size of the MPA may explain the lack of clear results. However, the learned lessons enable us to make recommendations to monitor fish population in MPAs using hydroacoustic methods. Evaluation procedures using these methods are proposed highlighting the importance of a rigorous survey protocol to insure the exploitation of the entire acquired time series.

Keywords: Estuary; Fish; Hydro-acoustics; Marine Protected Areas; West Africa

Introduction

The important decrease of fish stocks during the last decades, at local and global scales, has led to a push for stronger marine conservation efforts [1], whatever the true level of global fish stocks [2]. As a tool to conserve marine resources and manage them, Marine Protected Areas (MPA) have recently received much interest around the world [3-7]. The world conservation union [8] provides the following definition of a MPA: "Any area of intertidal or subtidal terrain, together with its overlying water and associated flora, fauna, historical and cultural features, which has been reserved by law or other effective means to protect part or the entire enclosed environment." Such marine reserves may provide multiple benefits like the protection of habitat, the conservation of biodiversity, the protection or enhancement of fish stocks, the export of animals to exploited areas, the creation of sites for scientific investigation, baseline information and education [9]. However, to assess the role and the efficiency of a MPA, monitoring protocols must be established based on scientific data time series. Developing countries have recently joined these new preservation tools and implemented new MPA, but there is still a clear gap between developed and developing nations in MPA establishment [10].

In Senegal (West Africa), the Sine-Saloum estuary is characterised by an important mangrove forest, an inverse salinity due to freshwater input scarcity and high evaporation, and a high biodiversity of fish population [11,12]. Because of its important ecological [11] and economical roles [13,14] it was essential to preserve this ecosystem. The Sine-Saloum estuary (800 km²) is made up of three main channels, Saloum, Diomboss and Bandiala, from North to South. These three main channels are interconnected by a network of small channels, including the Bamboing channel (Figure 1), where a MPA has been implemented in 2003 [15]. This MPA is a no-take area where fishing is completely banned [15,16]. Under these conditions and since its creation, the Bamboing MPA is monitored using hydro-acoustical methods to survey its fish assemblage [17].

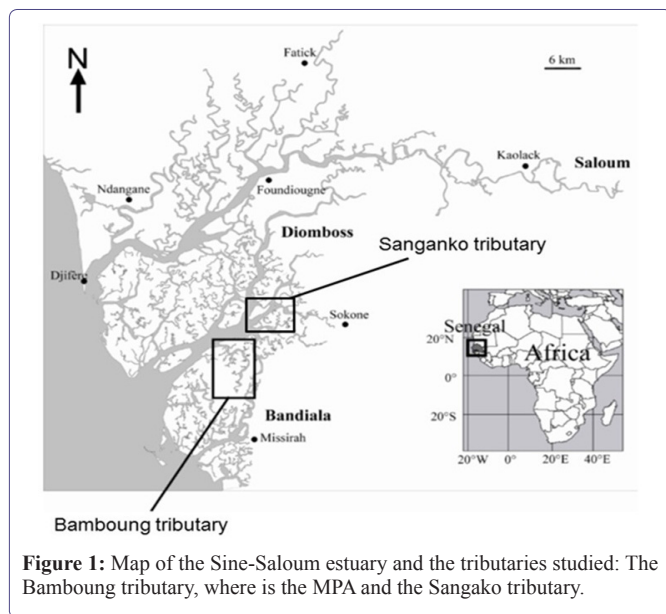


Figure 1: Map of the Sine-Saloum estuary and the tributaries studied: The Bamboung tributary, where is the MPA and the Sangako tributary.

Hydro-acoustics is a widely used approach to monitor fish population in various environments [18] including estuaries in temperate and tropical areas [19-22]. This non-intrusive method provides high resolution observations, allowing the monitoring of fish stocks at large scales [18]. Using acoustic data collected from 2003 to 2010 in the Bamboung MPA, and from 2008 to 2010 in a surrounding area, the main objectives of this work are: 1/ to describe the fish assemblage changes over time in the MPA in terms of fish biomass and fish size, 2/ to evaluate the influence of the MPA onto the outside close area on fish biomass, and 3/ to document and discuss the inputs and limits of this approach in such an ecosystem, and more generally, of the use of the hydro-acoustics for MPA's monitoring.

Materials and Methods

Study site

The Bamboung tributary (13°50' N, 16°33' W) is a reproduction and nursery area for many fish species [23]. The MPA is about 15 km long, with a maximum width of 500 m and a changing depth (Figure 2) with a maximum of 15 m near the mouth. Its water covers an area of about 6.8 km² in a 70 km² ground area [23], and its tidal range is around 2 m. Climate is defined by two main hydrological seasons, and three periods: A long dry season which is cool from November to March and warm from April to June, and a short warm wet season, which extends from July to October. In the Bamboung MPA, mean water surface temperature varies from 25°C in March to 30.5°C in October, and salinity ranges from 31.8 in October to 43.2 in May [24,25].

Surveys were carried out inside the Bamboung MPA from 2003 to 2010 at all three periods. Since 2008, one close tributary, the Sangako, which is not in the protected area, has been added to the monitoring survey (Figure 1). This close tributary is similar to the Bamboung one in terms of bathymetry and environmental conditions like temperature and salinity, but its orientation faces the main mouth of the estuary, directly connected to open marine waters (Figure 1). It covers an area of 4.7 km² of water.

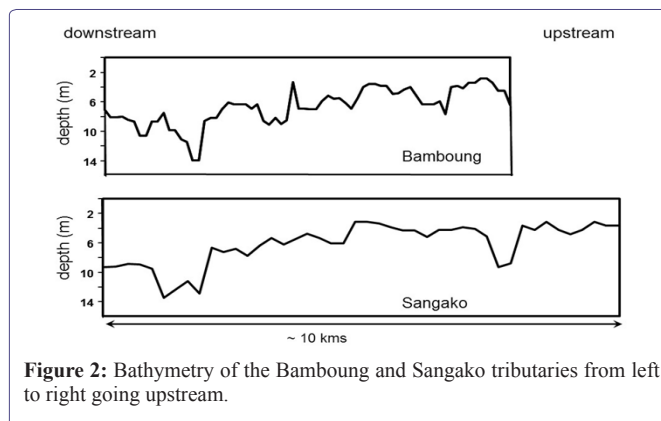


Figure 2: Bathymetry of the Bamboung and Sangako tributaries from left to right going upstream.

Experimental protocol

Hydro-acoustic data were collected using a standardised protocol of mobile vertical echo sounding used in similar ecosystems [26,27] including calibration steps as described by Foote et al. [28]. Prospecting has been performed along zig-zag tracks going downstream, at high tide, at a mean speed of 5 km/h-1, only during daytime for security reasons. A part of the surveys have been performed under practical conditions (weather conditions, anthropogenic perturbations) which have disrupted the protocol compliance, and then produced non-comparable or unusable data in the time series. In particular, among the three periods sampled, only two could really be studied over time: The dry cool (November to March) and the wet warm (July to October) seasons. The sampling of the dry warm season, from April to June, contained too much variability in the acquisition protocol due to external constraints (time of the tide, anthropogenic disturbance due to visitors). This leads to high difficulties in the analysis of the possible difference between the dry and wet seasons over the entire time series. As a consequence, to ensure the use of comparable data over the entire series, the choice was done to keep only the data for the dry cool and wet warm seasons (Table 1). The cover ratios, as defined by Aglen [29], were greater than 4 for the Bamboung and the Sangako. They were within values of low variability of the estimate, compared to the variability obtained for a degree of coverage smaller than 3.5, which is a clear threshold from this viewpoint [29].

Date	Season	BBG	SGK
17/10/2003	Wet	X	
10/3/2004	Dry	X	
26/10/2005	Wet	X	
23/03/2006	Dry	X	
12/10/2006	Wet	X	
2/4/2008	Dry	X	X
13/10/2008	Wet	X	X
7/4/2009	Dry	X	X
7/10/2009	Wet	X	X
16/03/2010	Dry	X	X
13/10/2010	Wet	X	X

Table 1: Hydro-acoustic sampling surveys carried out from 2003 to 2010 inside the Bamboung MPA (BBG) and since 2008, outside the MPA, in the Sangako (SGK) tributary, with date and season information. Missing data in the series are due to equipment issues.

The used equipment was a SIMRAD EY500 echosounder, with a split-beam 120 kHz transducer, beaming vertically fixed to the side of the boat at 0.50 m below the surface. The transducer was circular, with a total beam angle of 7.1° at -3 dB, the pulse length used was the medium one (0.3 ms) [26]. Windy conditions preclude the use of horizontal beaming [30].

Acoustic data processing

Acoustic data were processed using the Sonar5-pro® software [31] to perform echo integration, and Target Strength (TS) analysis [18]. The analysis thresholds were set at -65 dB for echo integration and target strength processing, as a compromise to target on fish-like organisms including juveniles [32], within a satisfying signal/noise ratio. The two acoustic metrics used were the volume backscattering strength (Sv in dB) [33], as a fish biomass proxy [21,34], named here after acoustic biomass, and the Target Strength (TS in dB) [33], as a fish size distribution proxy [18]. The discrimination characteristics of the individual targets were: Minimum and maximum returned pulse width 0.6 and 1.8 respectively, fold the transmitted pulse duration; maximum gain compensation 6 dB; maximum phase deviation of 3 phase steps. The water column was sampled from 1.5 m depth to 0.3 m above the bottom. To limit the intra-variability inside each tributary, the used data was an average of acoustic densities and TS, calculated in the linear domain, from Elementary Sampling Distance Units (ESDU) of 0.1 nmi, i.e., about 40 values by tributary, then meanned, over all 768 ESDU. Moreover, during the preliminary analysis process (visual verification, false echoes and noises removing and bottom checking) two types of fish structures were observed [35] in these daytime data: Fish schools and scattered fish populations (Figure 3). In hydro-acoustic surveys, the spatial variability is high during daytime, owing to the aggregation of fish in schools [36]. Fish schools presenting very high acoustic values, exceeding dramatically the scattered fish ones, may hide assemblage changes of the latter [37]. So, in order to study the variation of both fish structures, both data analysis were performed, including or not including, fish schools. The analysis focused first on the Bamboung MPA, from 2003 to 2010, and secondly on the Sangako tributary from 2008 to 2010.

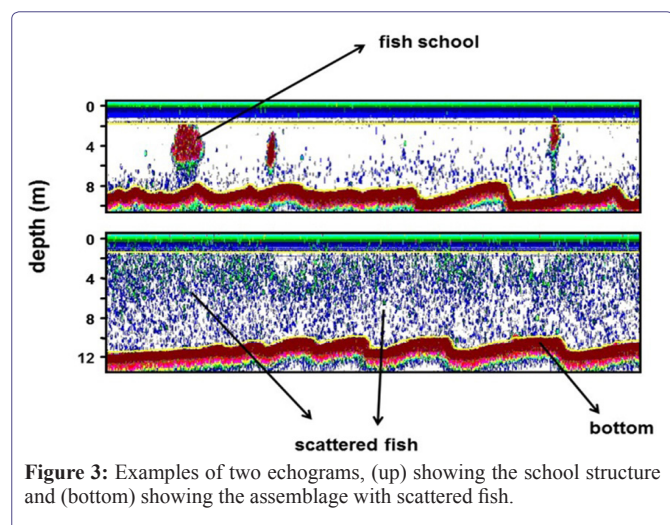


Figure 3: Examples of two echograms, (up) showing the school structure and (bottom) showing the assemblage with scattered fish.

The changes of acoustic densities over time in the Bamboung tributary has been studied using temporal trends, and the comparison

between fish assemblages for various configurations rely on non-parametric Kruskal-Wallis tests operated on the linear values.

Results

Changes of fish assemblage inside the MPA from 2003 to 2010

The change over time of mean Sv values, for data including schools, showed in both seasons a small increase of the mean acoustic biomass from 2003 to 2010. The trend was somewhat similar in both seasons, but the increase was not statistically significant at a p level of 0.05 (Figure 4). Without the schools, no clear trend could be brought out in both seasons (Figure 4). It was thus not possible to conclude on a statistically significant difference between seasons, whether the schools were included or not (Table 2). The comparisons of the fish biomass proxy obtained with and without the schools showed a significant higher value with the schools only in the dry season; there was no clear difference in the wet season (Table 2).

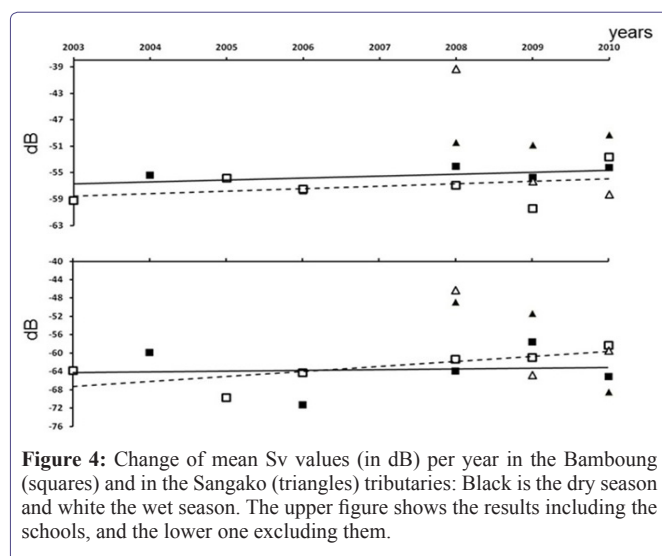


Figure 4: Change of mean Sv values (in dB) per year in the Bamboung (squares) and in the Sangako (triangles) tributaries: Black is the dry season and white the wet season. The upper figure shows the results including the schools, and the lower one excluding them.

Areas			Sv	TS
Bamboung	with schools	Wet/Dry	0.5127	NA
	without school	Wet/Dry	0.5127	0.0209
	with/without schools	Wet	0.1266	NA
	with/without schools	Dry	0.0495	NA
Sangako	with schools	Wet/Dry	0.5127	NA
	without school	Wet/Dry	0.8273	0.0495
	with/without schools	Wet	0.2752	NA
	with/without schools	Dry	0.5127	NA
Bamboung/Sangako	with schools	Wet	0.5127	NA
	without school		0.8273	0.2752
	with schools	Dry	0.0495	NA
	without school		0.5127	0.2752

Table 2: Non-parametric Kruskal-Wallis tests results to compare mean acoustic densities and mean acoustic sizes between tributaries, between seasons and with and without taking into account the schools for the density calculations. Significant tests (p < 0.05) are in bold.

The mean TS for the wet season of the fish assemblage did not show any change over time, conversely to the mean TS in the dry season, which increased over the years but not statistically significantly (at a p level of 0.05) (Figure 5). However, the mean acoustic sizes in the dry season were larger than those in the wet season, with a highly significant difference (Table 2).

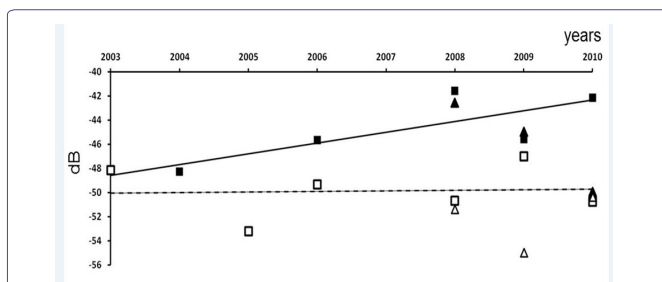


Figure 5: Change of mean TS (in dB) per year in the Bamboung (squares) and in the Sangako (triangles) tributaries: Black is the dry season and white the wet season.

Fish assemblage inside the Sangako tributary

When analysis included schools, there was a rather stable fish biomass proxy value along the three available years during the dry season (Figure 4). Conversely, during the wet season, the very high value in 2008 was very different from those of the two other years. Without the schools, stability was not maintained over the three years for the dry season and no clear pattern was visible in the wet season (Figure 4). It did not show statistically significant differences between seasons or between the densities calculated with and without schools (Table 2). For the acoustic sizes, there was a significant difference between the two seasons, as observed in the Bamboung (Table 2), with smaller fish observed during the wet season than during the dry season. It can be noted that for the three available years, the dry season mean acoustic size decreased from 2008 to 2010 ($R^2=0.96$) (Figure 5).

Comparison between inside and outside the MPA

In any given season, the mean number of schools was higher in the Bamboung tributary than in the Sangako tributary. The average number of schools over the entire years was 1.16 schools/0.1 nmi in the Bamboung, and 0.55 school/0.1 nmi for the Sangako. But during the dry season, the density per school was higher in the Sangako tributary than in the Bamboung one, leading, for the average acoustic biomass, to a higher value in the Sangako and rather stable over the three available years (Figure 4). This difference between the two tributaries was statistically significant (Table 2). For the wet season, the Sv value recorded in 2008 in the Sangako was very high compared to the values for 2009 and 2010 that were more similar to the Bamboung ones. No statistical differences could be brought out (Table 2). When the analysis excluded schools, during the dry season the acoustic biomass was much higher in the Sangako than in the Bamboung for 2008 and 2009, but not for 2010. During the wet season, Sv values showed a pattern similar to that observed with schools included (Figure 4). For both seasons, no significant differences were brought out (Table 2). In the dry season, the mean TS values for the Sangako and for the Bamboung had less than 1 dB difference in 2008 and 2009, while the TS for the Sangako was much lower in 2010 (Figure 5). In the wet season, the mean TS values of the two tributaries had less than 1 dB

difference in 2008 and 2010, but the Sangako's TS value was much lower in 2009 (Figure 5). These results did not show any significant trend, and nothing significant arose from statistical tests (Table 2).

Discussion

Despite the implementation of a precise and regular experimental protocol [26], field and weather conditions have sometimes led to data that were not usable for comparison analysis. So, unfortunately, some surveys had to be removed from the data set, and some time series were thus incomplete. It was necessary to make a selection within the data set, onto which the entire analysis could be done, so the resulting set was not as large as expected at the beginning of the monitoring program.

Due to practical and safety reasons, acoustic data have been collected only during daytime. Several acoustic studies have shown that if night-time datasets are different from daytime datasets [38,39], there is a positive significant correlation between the acoustic densities obtained for the two periods [40]. Thus, even if night-time data may be more accurate (the fish is usually scattered, that allows the extraction of a higher number of individual targets, and provides a more homogeneous distribution of the fish), the analysis of daytime data can be accepted as it has been done in other aquatic ecosystems [27,41].

Horizontal acquisitions are often used in this type of environment [20,42], but they are difficult to perform under windy conditions and data are difficult to analyse [30,43]. Furthermore, despite works exploring the biases in horizontal data analysis [20], vertical beaming provides more accurate data than horizontal beaming, as there is less variability in the fish answers relative to its sound directivity. The mean depth of the tributaries allowed to work in vertical beaming in an appropriate way as shown by Guillard et al. [26,44]. Surveys were carried out with a comparative approach and did not aim at obtaining absolute stock estimates.

For TS analysis, the number of targets in such a shallow environment is too low. So, after trying several spatial resolutions, it has been necessary to analyse the tributaries in their whole, and to use the overall average results.

According to the acoustic biomass proxy, Sv, the fish density lightly increased from 2003 to 2010 in the Bamboung tributary but the trends were not statistically significant. For the TS data recorded during the dry season, the trend was an increase over the years, with a low statistical significance ($p<0.2$) due to the low number of samples. The increase of the mean fish size in the protected area was in accordance with observations done in similar ecosystems [45,46]. During the wet season, the recruitment led to lower values of TS, due to the presence of small fish; TS were statistically different from those in the dry season, but no trend was apparent throughout the years. It clearly evidences the importance of the young fish in the population after the recruitment periods, which may have hidden the more permanent trends.

The densities recorded during the dry season were higher in the Sangako than in the Bamboung. No such conclusion can be inferred from the wet season data, however for 2 of the 3 years, this was still true. Keeping in mind that this observation was made on a sample of only 3 years, some interpretations can be considered.

According to the orientation of the Sangako tributary relative to the main channel, straight connected to the sea, these acoustic results question a possible marine influence that may be higher on the Sangako than on the Bamboung tributary. This configuration could lead to more exchanges between the tributary and the marine zone. Furthermore, as more bigger fish (i.e., top predators) were observed inside the Bamboung MPA than outside [47], fish may form numerous small schools, a well-known aggregative behaviour against predators [48-50]. Finally, avoidance behaviour [51-53], could be more developed in the Bamboung MPA than in the other tributaries. Fishing being prohibited inside the MPA, boats passing through it are scarce conversely to the Sangako tributary which is edged by numerous villages and is highly fishery exploited. Thus, fish schools inside the MPA got less used to boat noises, and schools of bigger fish could easily escape and avoid detection, more than schools from other zones where passing boats and fishing activities are substantial. The fish size composition for the tributaries of Bamboung and of Sangako did not show significant differences, whereas fishing was recorded in the Sangako: Monitor fish assemblage within a shallow MPA using hydroacoustics, was a challenge [20,54] although it is feasible.

Due to practical constraints, the data proved to be not enough regular or time series not enough long to provide statistically significant conclusions on the change of the biomass, size distributions of the fish assemblage in the close vicinity of the MPA, especially due to the great connectivity of this area with outside channels and the small size of the protected area. Acoustic approaches should be appropriate for MPAs monitoring because of their non-intrusive characteristics, and of their high-resolution data acquisition in such a highly variable environment. But they ought to be complementary to traditional sampling techniques in estuarine environments [55-57]. The Bamboung fish assemblage is unusual for an estuarine environment, because there are no species of continental origin: Fresh water comes only from rain and some resurgence and not from fluvial sources. In this particular context, the estuary and the mangrove play their nursery role [58], and the population was dominated by marine-estuarine and estuarine-marine species. Strict estuarine species were poorly represented and therefore the stable part of the population was weakly represented. This implies that even without a strong variability of the environment, the population itself will undergo strong seasonal variations due to ontogenetic migrations. The seasonal cycle in the Bamboung tributary can be outlined as follows [47]:

End of rainy season: Entry of juveniles of marine origin causing a high abundance increase of small individuals. This leads to a higher specific diversity and to a decrease of the mean sizes.

End of dry cool season: Recruitment inside and outside the MPA continues along with the juveniles grow. This leads at this season, to an increase of the abundance, and to a peak of biomass and mean sizes.

End of dry warm season: Species are mainly in a phase of maturation, and start to leave the tributary to get into the marine environment. Biomass and abundance of the marine species strongly decrease; the mean size of the assemblage decreases also compared to the end of the dry cool season.

The assemblage from marine origin has a strong influence on this cycle, it produces an inter-season variability as a large amount of these species leaves the tributary for reproduction, and permanent

species are scarce. This effect can be observed differently depending on the estuaries, but is highly significant in the case of an atypical estuary such as the Saloum, resulting in important biomass exports which may hide the positive effects within the MPA.

Our observations were consistent with such trends. Nevertheless to ensure reliable and statistically significant measurements, in order to follow the variations of biomass and size structure indicators in such variable environments, a precise application of a standard protocol is essential. Thus, any variability due to the experimental protocol is contained. The standard protocol is defined by the acquisition procedure, but is also constrained by the environmental conditions. In addition to the disturbance caused by boats, other parameters may cause variability such as the seasons [26], the effects of brightness or tides [59]. It is necessary to overcome the variability caused by these parameters by performing the surveys in strictly similar environmental conditions. When patterns are well described, it is later possible to focus on one or two periods of the year. Moreover, in such estuaries, tributaries are in connection with each others. As a complement to surveys, the migrations inwardly and outwardly from the protected areas, should therefore be accurately studied, to clarify the trends observed for the fish assemblage. Fixed transducers could be set at the entrance of the tributary, coupled with environmental probes (temperature, light, turbidity) and flow meters, to analyse the migration rhythms between the main channel and the protected area. In order to overcome the avoidance phenomenon, it could be added in the monitoring protocol of MPAs, data acquisition at moored stations during day and night [26]. It could provide a better understanding of the behaviour of fish populations, increase the number of individual TS, and so improve the understanding of ecosystem functioning. In the same way, to extend observations Unmanned Vehicle (UVs) technology which is developing rapidly can improve data collection [60,61]. It seems absolutely necessary to perform a prior assessment of the environment, in areas that are planned to be closed for protection, in order to define and to perform a proper survey protocol. For this purpose and even, upstream of it, a whole study of the biological information on targeted species, physical information's on hydrodynamics, bathymetry, etc. must be done [62], and the method of mapping fish habitat [63] for example may support the choice of the areas to be protected. Then some remote sensing measurements of environment parameters [64] may be useful to define monitoring protocol. In addition, Moffitt propose to define spatial and time scales used to evaluate the efficiency of a MPA, in terms of "generation time" and "dispersal units" (the latter also previously mentioned by Kenchington [65], instead of absolute duration or distance. The scales are thus clearly related to the concerned assemblages. They indicate also that the assessment of the efficiency of a MPA by means of a time series approach provides better results than through an inside/outside comparison approach. This may be applicable to the Bamboung situation facing inside/outside exchanges.

Within the various possible methods, hydro acoustic monitoring can be a valuable tool to survey MPAs because of its advantage of being non intrusive, with certain conditions: Apply accurate protocols, perform a sampling rate in time allowing to get rid of the short term variability in order to better estimate the long term variability, include acoustics within a complete environment study, and look for known fish behaviour patterns over time.

Acknowledgement

This study was financially supported by the French ANR (Agence Nationale de la Recherche) in the context of a pluridisciplinary project: AMPHORE (Marine Protected Areas and Fisheries Management by Optimisation of Resources and Ecosystems.). The authors are grateful to AFD (Agence Française de Développement), CSRP (Commission Sous Régionale Des Pêches), CRODT (Centre de Recherches Océanographiques de Dakar) and Narou Heuleuk NGO for their assistance. Most statistical tests were performed using the R programming language [66] and we greatly acknowledge all the contributors for making freely available such an invaluable tool.

References

1. Pauly D, Watson R, Alder J (2005) Global trends in world fisheries: Impacts on marine ecosystems and food security. *Philos Trans R Soc Lond B Biol Sci* 360: 5-12.
2. Daan N, Gislason H, Pope JG, Rice JC (2011) Apocalypse in world fisheries? The reports of their death are greatly exaggerated. *International Council for the Exploration of the Sea Journal of Marine Science* 68: 1375-1378.
3. Roberts CM, Bohnsack JA, Gell F, Hawkins JP, Goodridge R (2001) Effects of marine reserves on adjacent fisheries. *Science* 294: 1920-1923.
4. Hilborn R, Stokes K, Maguire JJ, Smith T, Botsford LW, et al. (2004) When can marine reserves improve fisheries management? *Ocean and Coastal Management* 47: 197-205.
5. Mora C, Sale PF (2011) Ongoing global biodiversity loss and the need to move beyond protected areas: A review of the technical and practical shortcomings of protected areas on land and sea. *Marine Ecology Progress Series* 434: 251-266.
6. Rice J, Moksness E, Attwood C, Brown SK, Dahle G, et al. (2012) The role of MPAs in reconciling fisheries management with conservation of biological diversity. *Ocean & Coastal Management* 69: 217-230.
7. Nikitine J, Wilson AMW, Dawson TP (2018) Developing a framework for the efficient design and management of large scale marine protected areas. *Marine Policy* 94: 196-203.
8. Kelleher G (1999) Guidelines for marine protected areas. International Union for Conservation of Nature, Gland, Switzerland.
9. Allison GW, Lubchenco J, Carr MH (1998) Marine reserves are necessary but not sufficient for marine conservation. *Ecological Applications* 8: 79-92.
10. Marinesque S, Kaplan DM, Rodwell LD (2012) Global implementation of marine protected areas: Is the developing world being left behind? *Marine Policy* 36: 727-737.
11. Diouf PS (1996) The Fish communities of West African estuaries: The example of the Sine-Saloum hyperhaline estuary. Doctorat d'Université. Université de Montpellier 2, France.
12. Simier M, Blanc L, Aliaume C, Diouf PS, Albaret JJ (2004) Spatial and temporal structure of fish assemblages in an "inverse estuary", the Sine Saloum system (Senegal). *Estuarine, Coastal and Shelf Science* 59: 69-86.
13. Dia IMM (2003) Élaboration et mise en œuvre d'un plan de gestion intégrée : La réserve de biosphère du delta du saloum, senegal. Union Internationale pour la Conservation de la Nature, Gland, Switzerland.
14. Deme M, Failler P, Van de Walle G (2010) Dynamiques d'exploitation et de valorisation des ressources halieutiques dans la Réserve de Biosphère du Delta Du Saloum (RBDS). Institut Sénégalais de Recherches Agricoles 9: 1-19.
15. Breuil C (2011) Marine protected areas: Country case studies on policy, governance and institutional issues. Sanders JS, Greboval D, Hjort A (eds.). Marine protected areas. FAO technical paper, Rome, Italy.
16. Faye D, Tito de Morais L, Raffray J, Sadio O, Thiawa OT, et al. (2011) Structure and seasonal variability of fish food webs in an estuarine tropical marine protected area (Senegal): Evidence from stable isotope analysis. *Estuarine, Coastal and Shelf Science* 92: 607-617.
17. Sow I, Guillard J (2010) Suivi par hydroacoustique du peuplement piscicole d'une Aire Marine Protégée du Sine-Saloum (Sénégal): Bilan 2003-2007. *Journal des Sciences Halieutique et Aquatique* 1: 21-32.
18. Simmonds J, MacLennan D (2005) Fisheries Acoustics: Theory and practice. 2nd edition. Blackwell Science, Oxford, UK.
19. Krumme U, Hanning A (2005) A floating device for stationary hydroacoustic sampling in shallow waters. *Fisheries Research* 73: 377-381.
20. Boswell KM, Miller MW, Wilson CA (2007) A lightweight transducer platform for use in stationary shallow water horizontal-aspect acoustic surveys. *Fisheries Research* 85: 291-294.
21. Boswell KM, Wilson MP, MacRae PSD, Wilson CA, Cowan JH (2011) Seasonal estimates of fish biomass and length distributions using acoustics and traditional nets to identify estuarine habitat preferences in barataria bay, louisiana. *Marine and Coastal Fisheries* 2: 83-97.
22. Samedy V, Josse E, Guillard J, Pierre M, Girardin M, et al. (2013) Comparisons of vertical hydroacoustic survey strategies for monitoring fish distributions in the Gironde estuary (France). *Estuarine, Coastal and Shelf Sciences* 134: 174-180.
23. Albaret JJ, Simier M, Sadio O (2005) Suivi biologique des peuplements de poissons d'une aire protégée en zone de mangrove: Le bolong de Bamboung (Sine Saloum, Sénégal), IRD, Pg no: 1-80.
24. Tito de Morais L, Simier M, Raffray J, Sadio O, Ecoutin JM (2012) Suivi biologique des peuplements de poissons d'une aire protégée en zone de mangrove: Le bolong de Bamboung (Sine-Saloum, Sénégal). IRD, Dakar, Senegal.
25. Ecoutin JM, Sadio O, Simier M, Raffray J, Tito de Morais L (2012) Comparaison des peuplements de poissons d'une aire protégée en zone de mangrove (le bolon de Bamboung, Sine Saloum, Sénégal) avec les peuplements de deux sites proches non protégés de l'exploitation halieutique: Années 2008-2010.
26. Guillard J, Albaret JJ, Simier M, Sow I, Raffray J, et al. (2004) Spatio-temporal variability of fish assemblages in the Gambia Estuary (West Africa) observed by two vertical hydroacoustic methods: Moored and mobile sampling. *Aquatic Living Resources* 17: 47-55.
27. Guillard J, Darchambeau F, Masilya P, Descy JP (2012) Is the fishery of the introduced Tanganyika sardine (*Limnothrissa miodon*) in Lake Kivu (East Africa) sustainable? *Journal of Great Lakes Research* 38: 524-533.
28. Foote KG, Knudsen HP, Vestnes DN, MacLennan, EJ Simmonds (1987) Calibration of acoustic instruments for fish density estimation: A practical guide. International Council for the Exploration of the Sea Journal of Marine Science 144: 1-69.
29. Aglen A (1989) Empirical results on precision-effort relationships for acoustic surveys. International Council for the Exploration of the Sea Council Meeting document, Pg no: 1-30.
30. Knudsen FR, Særgrov H (2002) Benefits from horizontal beaming during acoustic survey: Application to three Norwegian lakes. *Fisheries Research* 56: 205-211.
31. Balk H, Lindem T (2006) Sonar 4, Sonar 5, Sonar 6-Post-processing Systems. Operator Manual. University of Oslo, Norway.
32. Love RH (1977) Target strength of an individual fish at any aspect. *Journal of Acoustical Society of America* 62: 1397-1403.

33. MacLennan D, Fernandes PG, Dalen J (2002) A consistent approach to definitions and symbols in fisheries acoustics. *ICES Journal of Marine Science* 59: 365-369.
34. Emmrich M, Winfield IJ, Guillard J, Rustadbakken A, Vergès C, et al. (2012) Strong correspondence between gillnet catch per unit effort and hydroacoustically derived fish biomass in stratified lakes. *Freshwater Biology* 57: 2436-2448.
35. Guillard J (1998) Daily migration cycles of fish populations in a tropical estuary (Sine-Saloum, Senegal) using a horizontal-directed split-beam transducer and multibeam sonar. *Fisheries Research* 35: 23-31.
36. Fréon P, Soria M, Mullon C, Gerlotto F (1993) Diurnal variation in fish density estimate during acoustic surveys in relation to spatial distribution and avoidance reaction. *Aquatic Living Resources* 6: 221-234.
37. Fréon, P, Gerlotto F, Misund OA (1993) Consequences of fish behaviour for stock assessment. *International Council for the Exploration of the Sea Journal of Marine Science* 196: 190-195.
38. Mous PJ, Van Densen WLT, Machiels MAM (2004) Vertical distribution patterns of zooplanktivorous fish in a shallow, eutrophic lake, mediated by water transparency. *Ecology of Freshwater Fish* 13: 61-69.
39. Vondracek B, Degan DJ (1995) Among-and within-transect variability in estimates of shad abundance made with hydroacoustics. *North American Journal of Fisheries Management* 15: 933-939.
40. Guillard J, Perga ME, Colon M, Angeli N (2006) Hydroacoustic assessment of young-of-year perch, *Perca fluviatilis*, population dynamics in an oligotrophic lake (Lake Annecy, France). *Fisheries Management and Ecology* 13: 319-327.
41. Everson I, Taabu-Munyaho A, Kayanda R (2012) Acoustic estimates of commercial fish species in Lake Victoria: Moving towards ecosystem-based fisheries management. *Fisheries Research* 139: 65-75.
42. Kubecka JA, Duncan (1998) Diurnal changes of fish behaviour in a lowland river monitored by a dual-beam echosounder. *Fisheries Research* 35: 55-63.
43. Mouse PJ, Kemper J (1996) Applications of a hydroacoustic sampling technique in a large wind-exposed shallow lake. Cowx IG (eds.). *Stock Assessment in Inland Fisheries*. Wiley-Blackwell, Pg no: 179-195.
44. Guillard J (1996) Utilisation des méthodes acoustiques en milieu peu profond: Rivières, estuaires, zones côtières. *Oceanis* 22: 39-50.
45. Lester SE, Halpern BS, Grorud-Colvert K, Lubchenco J, Ruttenberg BI, et al. (2009) Biological effects within no-take marine reserves: A global synthesis. *Marine Ecology Progress Series* 384: 33-46.
46. Guisado DD, Cole RG, Davidson RJ, Freeman DJ, Kelly S, et al. (2012) Comparison of methodologies to quantify the effects of age and area of marine reserves on the density and size of targeted species. *Aquatic Biology* 14: 185-200.
47. Béhagle N, Brochier T, Guillard J, Laë R, Lebourges Dhaussy A, et al. (2013) L'aire marine protégée communautaire de Bamboung (Sine Saloum): Synthèse 2003-2011. Ecoutin JM (eds.). IRD, Dakar, Sénégal.
48. Zheng M, Kashimori Y, Hoshino O, Fujita K, Kambara T (2005) Behavior pattern (innate action) of individuals in fish schools generating efficient collective evasion from predation. *J Theor Biol* 235: 153-167.
49. Parrish JK (1999) Using behavior and ecology to exploit schooling fishes. *Environmental Biology of Fishes* 55: 157-181.
50. Partridge BL (1982) The structure and function of fish schools. *Sci Am* 246: 114-123.
51. Draštk V, Kubečka J (2005) Fish avoidance of acoustic survey boat in shallow waters. *Fisheries Research* 72: 219-228.
52. Gerlotto F, Castillo J, Saavedra A, Barbieri MA, Espejo M, et al. (2004) Three-dimensional structure and avoidance behaviour of anchovy and common sardine schools in central southern Chile. *International Council for the Exploration of the Sea Journal of Marine Science* 61: 1120-1126.
53. Brehmer P, Gerlotto F, Samb B (2000) Measuring fish avoidance during surveys. *International Council for the Exploration of the Sea, Council Meeting document K: 07*.
54. Thorne RE (1998) Review: Experiences with shallow water acoustics. *Fisheries Research* 35: 137-141.
55. Bethke E, Arrhenius F, Cardinale M, Håkansson N (1999) Comparison of the selectivity of three pelagic sampling trawls in a hydroacoustic survey. *Fisheries Research* 44: 15-23.
56. Frear PA (2002) Hydroacoustic target strength validation using angling creel census data. *Fisheries Management and Ecology* 9: 343-350.
57. Guillard J, Simier M, Sow I, Raffray J, Albaret JJ, et al. (2012b) Fish biomass estimates along estuaries: A comparison of vertical acoustic sampling at fixed stations and purse seine catches. *Estuarine, Coastal and Shelf Science* 107: 105-111.
58. Vidy G (2000) Estuarine and mangrove systems and the nursery concept: Which is which? The case of the sine saloum estuary system (Senegal). *Wetlands Ecology and Management* 8: 37-51.
59. Krumme U, Saint-Paul U, Rosenthal H (2004) Tidal and diel changes in the structure of a nekton assemblage in small intertidal mangrove creeks in northern Brazil. *Aquatic Living Resources* 17: 215-229.
60. Liu Z, Zhang Y, Yu X, Yuan C (2016) Unmanned surface vehicles: An overview of developments and challenges. *Annu Rev Control* 41: 71-93.
61. Guillard J, Le Meaux O, Vincent-Falquet R, Goulon C (2018) The harle: An autonomous vehicle for non-intrusive fish population studies in lakes. *ELLS-IAGLR-2018 Big Lakes-Small World* September 23-28, 2018 (Evi-an - France).
62. Sale PF, Cowen RK, Danilowicz BS, Jones GP, Kritzer JP, et al. (2005) Critical science gaps impede use of no-take fishery reserves. *Trends in Ecology and Evolution* 20: 74-80.
63. Le Pape O, Delavenne J, Vaz S (2014) Quantitative mapping of fish habitat: A useful tool to design spatialised management measures and marine protected area with fishery objectives. *Ocean & Coastal Management* 87: 8-19.
64. Kachelriess D, Wegmann M, Gollock M, Pettorelli N (2014) The application of remote sensing for marine protected area management. *Ecological Indicators* 36: 169-177.
65. Kenchington RA (1990) *Managing Marine Environments*. Taylor and Francis, New York, USA.
66. R Core Team (2013) *R: A language and environment for statistical computing*. R Foundation for Statistical Computing, Vienna, Austria.



- Journal of Anesthesia & Clinical Care
- Journal of Addiction & Addictive Disorders
- Advances in Microbiology Research
- Advances in Industrial Biotechnology
- Journal of Agronomy & Agricultural Science
- Journal of AIDS Clinical Research & STDs
- Journal of Alcoholism, Drug Abuse & Substance Dependence
- Journal of Allergy Disorders & Therapy
- Journal of Alternative, Complementary & Integrative Medicine
- Journal of Alzheimer's & Neurodegenerative Diseases
- Journal of Angiology & Vascular Surgery
- Journal of Animal Research & Veterinary Science
- Archives of Zoological Studies
- Archives of Urology
- Journal of Atmospheric & Earth-Sciences
- Journal of Aquaculture & Fisheries
- Journal of Biotech Research & Biochemistry
- Journal of Brain & Neuroscience Research
- Journal of Cancer Biology & Treatment
- Journal of Cardiology & Neurocardiovascular Diseases
- Journal of Cell Biology & Cell Metabolism
- Journal of Clinical Dermatology & Therapy
- Journal of Clinical Immunology & Immunotherapy
- Journal of Clinical Studies & Medical Case Reports
- Journal of Community Medicine & Public Health Care
- Current Trends: Medical & Biological Engineering
- Journal of Cytology & Tissue Biology
- Journal of Dentistry: Oral Health & Cosmesis
- Journal of Diabetes & Metabolic Disorders
- Journal of Dairy Research & Technology
- Journal of Emergency Medicine Trauma & Surgical Care
- Journal of Environmental Science: Current Research
- Journal of Food Science & Nutrition
- Journal of Forensic, Legal & Investigative Sciences
- Journal of Gastroenterology & Hepatology Research
- Journal of Gerontology & Geriatric Medicine
- Journal of Genetics & Genomic Sciences
- Journal of Hematology, Blood Transfusion & Disorders
- Journal of Human Endocrinology
- Journal of Hospice & Palliative Medical Care
- Journal of Internal Medicine & Primary Healthcare
- Journal of Infectious & Non Infectious Diseases
- Journal of Light & Laser: Current Trends
- Journal of Modern Chemical Sciences
- Journal of Medicine: Study & Research
- Journal of Nanotechnology: Nanomedicine & Nanobiotechnology
- Journal of Neonatology & Clinical Pediatrics
- Journal of Nephrology & Renal Therapy
- Journal of Non Invasive Vascular Investigation
- Journal of Nuclear Medicine, Radiology & Radiation Therapy
- Journal of Obesity & Weight Loss
- Journal of Orthopedic Research & Physiotherapy
- Journal of Otolaryngology, Head & Neck Surgery
- Journal of Protein Research & Bioinformatics
- Journal of Pathology Clinical & Medical Research
- Journal of Pharmacology, Pharmaceutics & Pharmacovigilance
- Journal of Physical Medicine, Rehabilitation & Disabilities
- Journal of Plant Science: Current Research
- Journal of Psychiatry, Depression & Anxiety
- Journal of Pulmonary Medicine & Respiratory Research
- Journal of Practical & Professional Nursing
- Journal of Reproductive Medicine, Gynaecology & Obstetrics
- Journal of Stem Cells Research, Development & Therapy
- Journal of Surgery: Current Trends & Innovations
- Journal of Toxicology: Current Research
- Journal of Translational Science and Research
- Trends in Anatomy & Physiology
- Journal of Vaccines Research & Vaccination
- Journal of Virology & Antivirals

Submit Your Manuscript: <http://www.heraldopenaccess.us/Online-Submission.php>